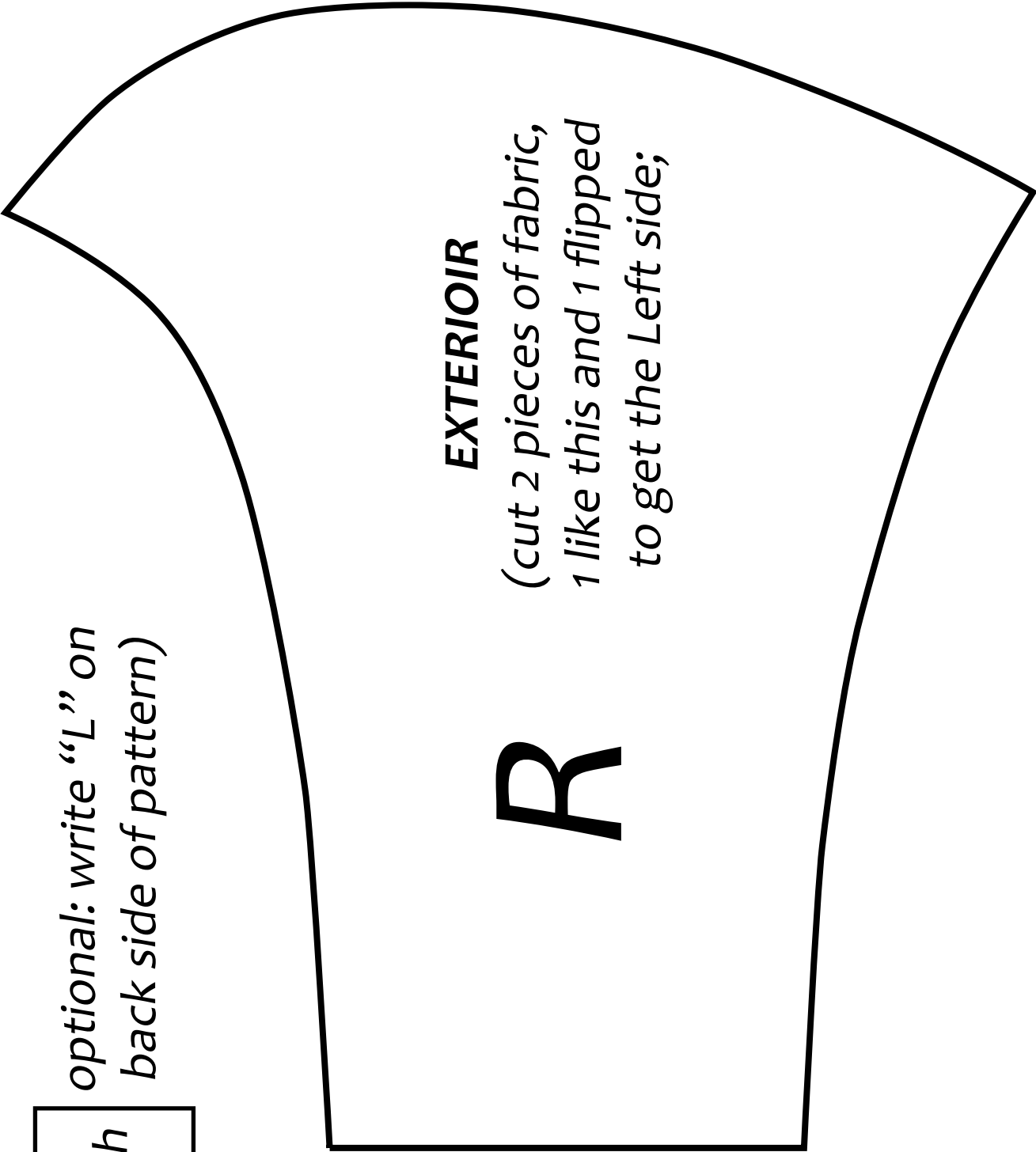


1 inch

*optional: write "L" on
back side of pattern*



R

EXTERIOIR

*(cut 2 pieces of fabric,
1 like this and 1 flipped
to get the Left side;*

1 inch

*optional: write "L" on
back side of pattern)*

Cheek R
cut 2:
1 R+ 1 L
(flip for L)

Mouth R
cut 2:
1 R+ 1 L
(flip for L)

